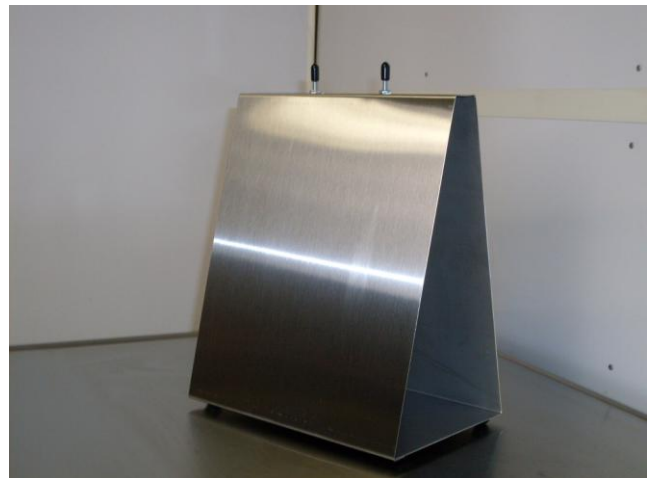
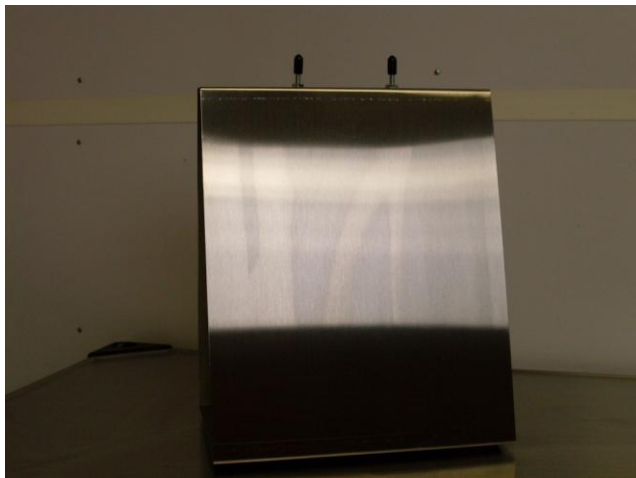


A-Frame Style Deli Saddle Bag Dispenser

Specifications	
Name	A-Frame Style Deli Saddle Bag Dispenser
Item #	013
Manufacturer	Healix Enterprises, Inc
Contact	812-282-9869

Sanitation Assurance™ (SA)

- All materials intended for direct food contact are NSF accepted or FDA certified
- Materials Safety Data Sheets Available: www.pineappleking.com
- Made in the USA
- Footprint of 6"x 9", and 11" tall
- All stainless steel construction (.22 gauge food-grade #304)
- Saddle hardware is zinc coated steel and rubber tipped
- Feet are slip resist polyurethane rubber
- Total weight is 2.1 pounds
- Boxed (in multiples of 8) 20"x10"x23"



HEALIX

Design and Manufacturing

Visit Us On the Web: www.pineappleking.com

Call Us: Phone/Fax: 812-282-9869